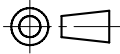


Orbray



Explanation of output alignment

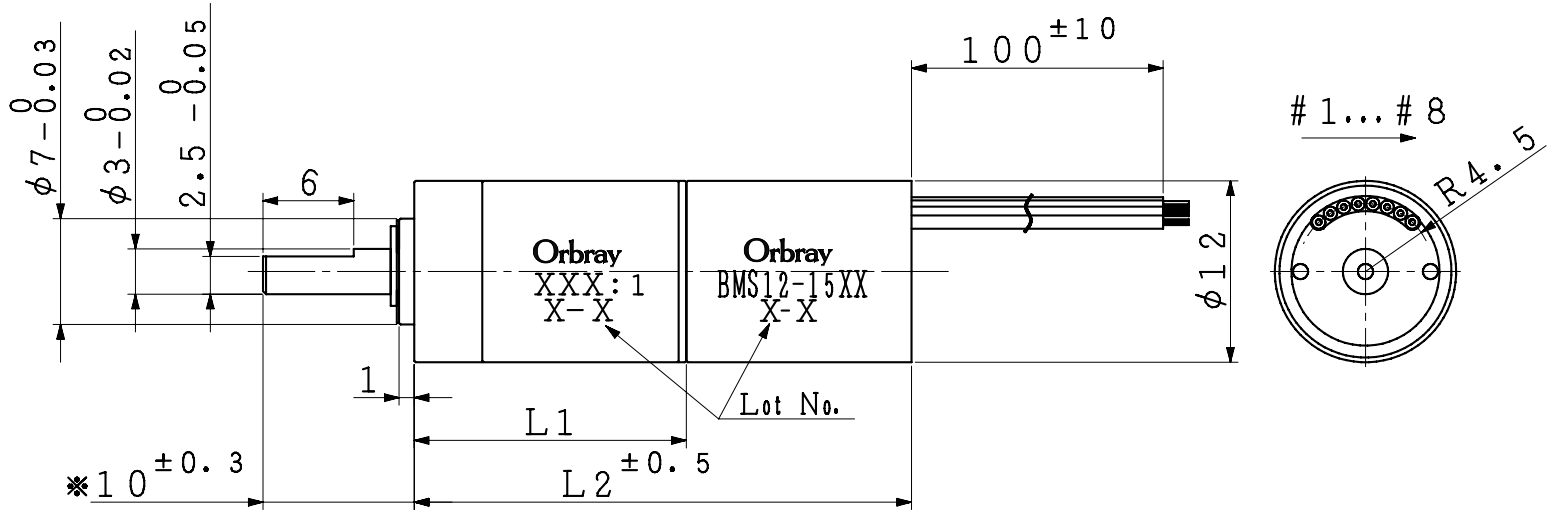
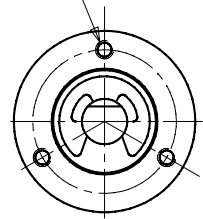
line of hall element The coil terminal

No	Sym	Color	No	Sym	Color
# 1	U	Gray	# 5	GND	Blue
# 2	V	Brown	# 6	Hu	White
# 3	W	Yellow	# 7	Hv	Black
# 4	Vdd	Orange	# 8	Hw	Red

MOTOR LENGTH

GEAR RATIO	L1	L2
3.5	14.2	29.2
4.8	14.2	29.2
12	18	33
23	18	33
58	21.8	36.8
107	21.8	36.8
509	25.7	40.7

3×M1.2×0.25
DEPTH 3.5
P.C.D. 9.5±0.05



NOTE 1) MARKED(*) IS OUTPUT SHAFT LENGTH MEASURED WHEN IT IS PUSHED TO MOTOR SIDE.
*印寸法は出力軸をモータ側に押しつけた時の値を示す。

2) LOT NO.
EXAMPLE) JANUARY, 2018
「18-A」

JANUARY: A, FEBRUARY: B... DECEMBER: L
1月: A, 2月: B... 12月: L
「-」 : MADE IN THAILAND
「-」有り : 海外工場生産
「-」NONE : MADE IN JAPAN
「-」無し : 国内工場生産
THE END TWO DIGIT OF CHRISTIAN YEAR
西暦年数末尾数字2桁

- 3) THE LEAD WIRE IS AWG28 UL3302.
リード線はAWG28 UL3302を使用する。
- 4) OUTSIDE DIAMETER IS NOT APPLIED TO THE CAULKING.
外径寸法公差はカシメ部を除く。
- 5) 3×M1.2 AND LEAD WIRE DRAWING POSITIONS ARE OUT OF DIMENSIONAL CONTROL.
3×M1.2とリード線引き出し角度は寸法管理外とする。

TOLERANCE				△	×					
DIMENSION (±)				△	×					
	0	1	2	3	ANGLE					
L ≤ 6	0.05	0.1	0.1	0.2	±1°	△	×			
6 < L ≤ 30	0.1	0.1	0.2	0.5		△	×			
30 < L ≤ 120	0.15	0.2	0.3	0.8		△	×			
120 < L	0.2	0.3	0.5	1.2		△	×			
MATERIAL	FINISH		QTY.	SCALE	DATE	NOTE		DRW.	CHK.	APPD.
				2/1		BMS12-15P				
APPD.	CHK.	DSGN.	DRW.	UNIT	TITLE					
				1/1mm	Outline Drawing					
				DWG. NO.						
				REF. NO.						
		17-12-01	17-12-01	CHK. NO.	REMARK					